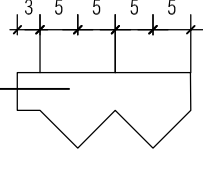
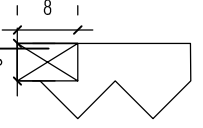
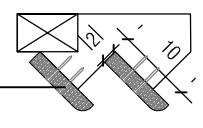
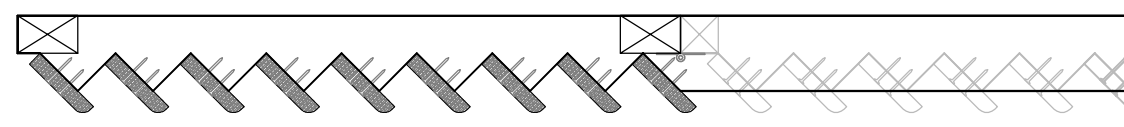
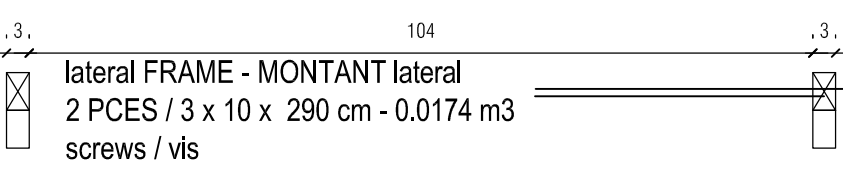
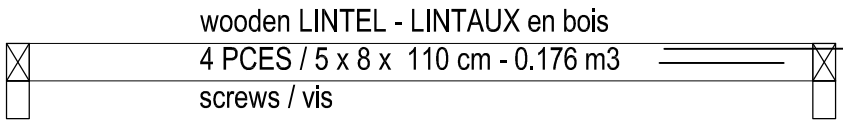
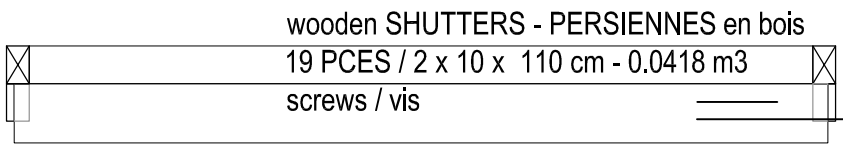
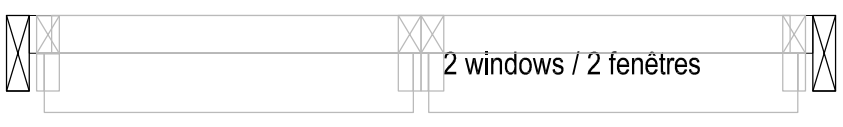


wooden SHUTTERS
 PERSIENNES en bois
 19 PCES / 2 x 10 x 110 cm
 0.0418 m3
 screws / vis

lateral FRAME - MONTANT lateral
 2 PCES / 3 x 10 x 290 cm - 0.0174 m3
 screws / vis

wooden LINTEL - LINTAUX en bois
 4 PCES / 5 x 8 x 110 cm - 0.176 m3
 screws / vis



CONSTRUCTION D'UNE - CONSTRUCTION OF A ECOLE PRIMAIRE - PRIMARY SCHOOL THAVIVANH MEILLARD ÎLE DE - DON DET - ISLAND / MEKONG LAOS - LAO		
MAITRE D'OUVRAGE 200 FAMILLES - 200 FAMILIES	DOSSIER LAOS - 2017 - DD 01	
PLAN WINDOWS - détail A - FENÊTRES		NO DE PLAN detail 60-14
MODIFICATIONS	ARCHITECTE	INDICE exe B
		ECHELLE 1 : 10
		DATE 2018-0125