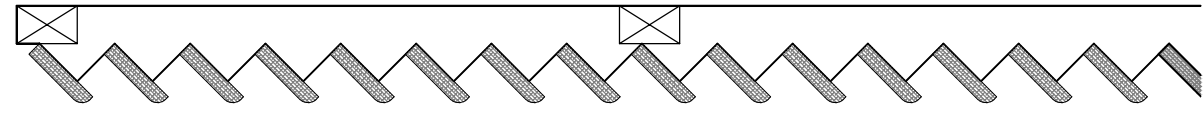
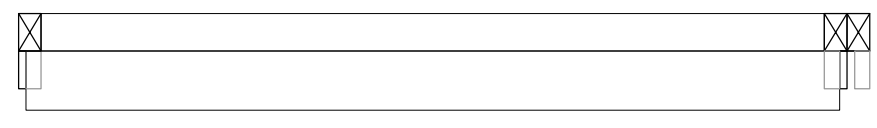


wooden LINTEL - LINTAUX en bois
4 PCES / 5 x 8 x 110 cm - 0.0176 m3
screws / vis

wooden SHUTTERS
PERSIENNES en bois
29 PCES / 2 x 10 x 110 cm
0.0638 m3
screws / vis

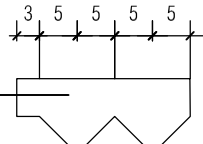
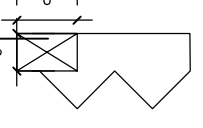
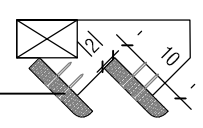
lateral FRAME - MONTANT lateral
2 PCES / 3 x 10 x 290 cm - 0.0174 m3
screws / vis



wooden SHUTTERS - PERSIENNES en bois
29 PCES / 2 x 10 x 110 cm - 0.0638 m3
screws / vis

wooden LINTEL - LINTAUX en bois
4 PCES / 5 x 8 x 110 cm - 0.176 m3
screws / vis

lateral FRAME - MONTANT lateral
2 PCES / 3 x 10 x 290 cm - 0.0174 m3
screws / vis



CONSTRUCTION D'UNE - CONSTRUCTION OF A ECOLE PRIMAIRE - PRIMARY SCHOOL THAVIVANH MEILLARD ÎLE DE - DON DET - ISLAND / MEKONG LAOS - LAO		
MAITRE D'OUVRAGE 200 FAMILLES - 200 FAMILIES	DOSSIER LAOS - 2017 - DD 01	
PLAN SCHUTTERS 110 - détail - PERSIENNES 110	INDICE exe B	NO DE PLAN 60-11
MODIFICATIONS	ARCHITECTE	ECHELLE 1 : 10
		DATE 2018-0126