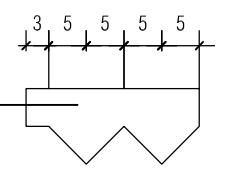
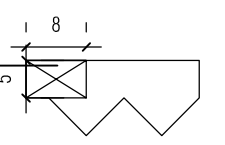
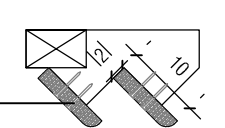
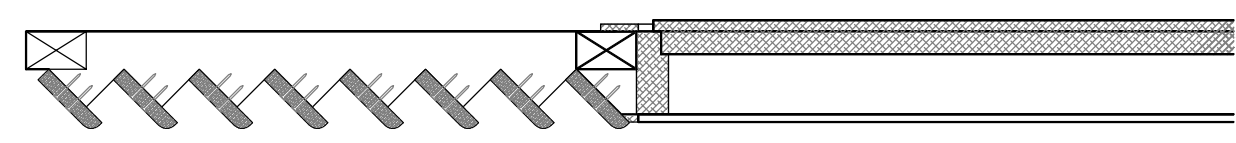
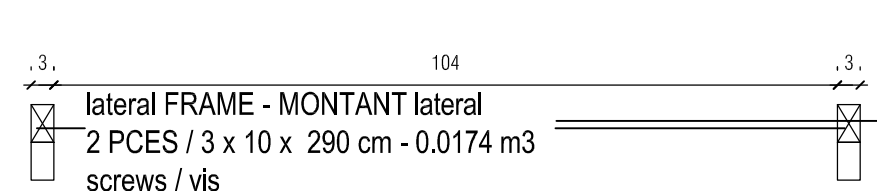
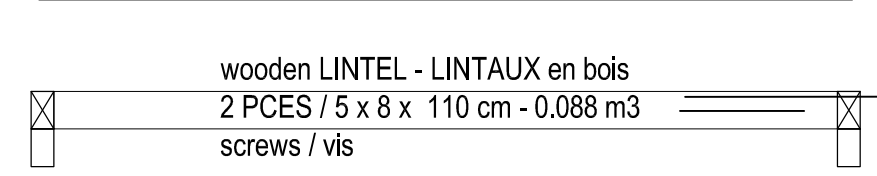
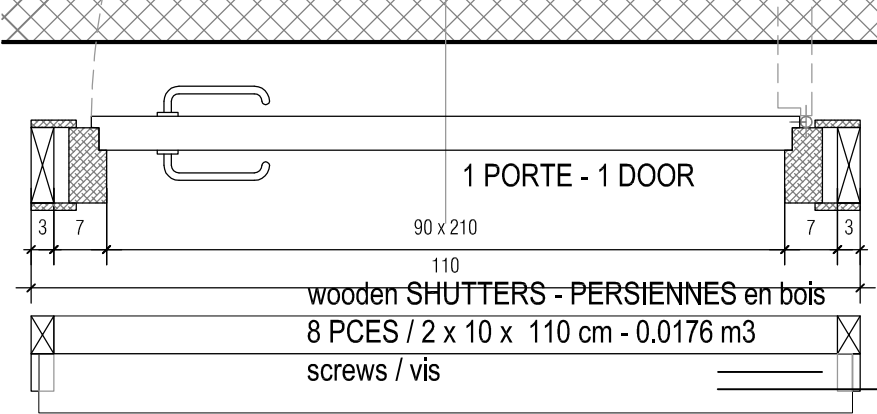


- wooden LINTEL - LINTAUX en bois
2 PCES / 5 x 8 x 110 cm - 0.0088 m3
screws / vis
- wooden SHUTTERS
PERSIENNES en bois
19 PCES / 2 x 10 x 110 cm
0.0418 m3
screws / vis
- lateral FRAME - MONTANT lateral
2 PCES / 3 x 10 x 290 cm - 0.0174 m3
screws / vis



CONSTRUCTION D'UNE - CONSTRUCTION OF A ECOLE PRIMAIRE - PRIMARY SCHOOL THAVIVANH MEILLARD ÎLE DE - DON DET - ISLAND / MEKONG LAOS - LAO		
MAITRE D'OUVRAGE 200 FAMILLES - 200 FAMILIES	DOSSIER LAOS - 2017 - DD 01	
PLAN DOORS - détail A - PORTES	INDICE exe B	NO DE PLAN detail 60-13
MODIFICATIONS	ARCHITECTE	ECHELLE 1 : 10
		DATE 2018-0126